

Component Placing, Electrical

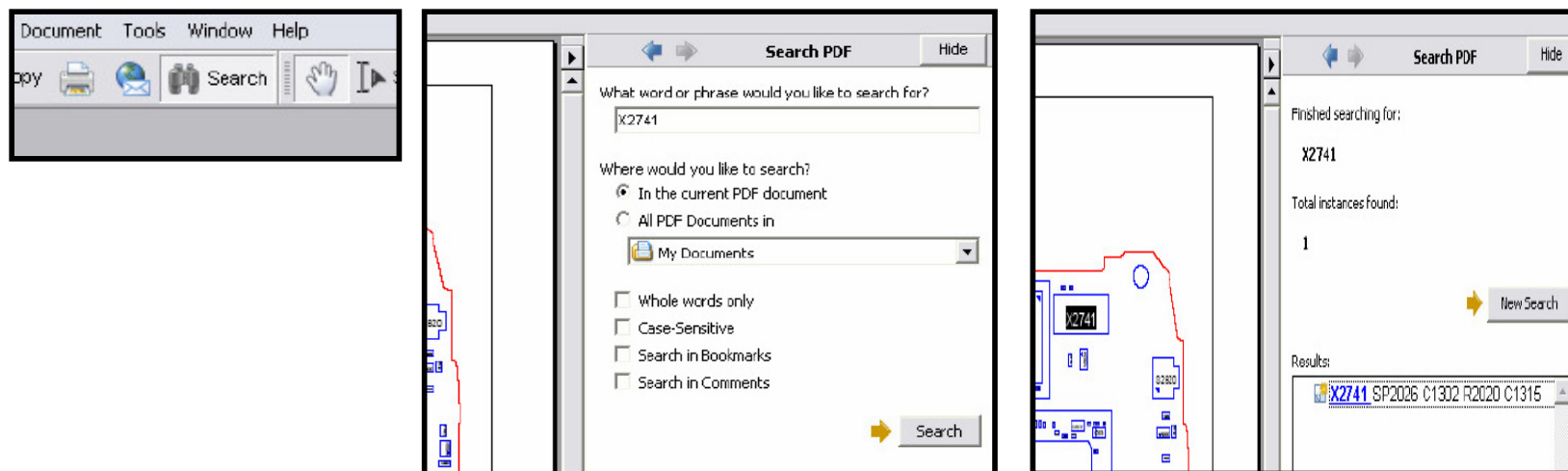
Applicable for Z250 and Z320

Contents

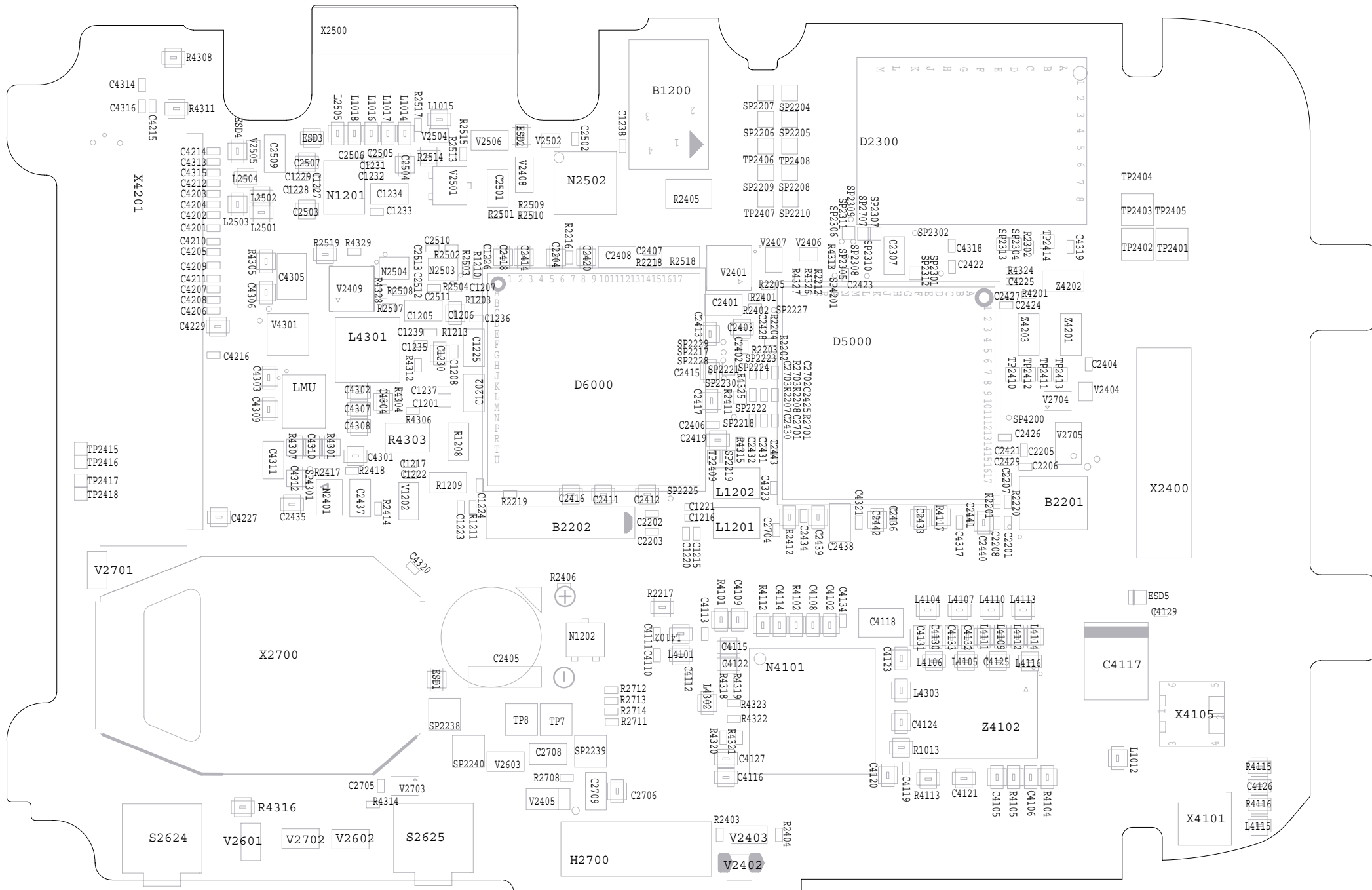
1	Mounting drawing table	2
2	Mounting drawing	3
3	Revision history	6

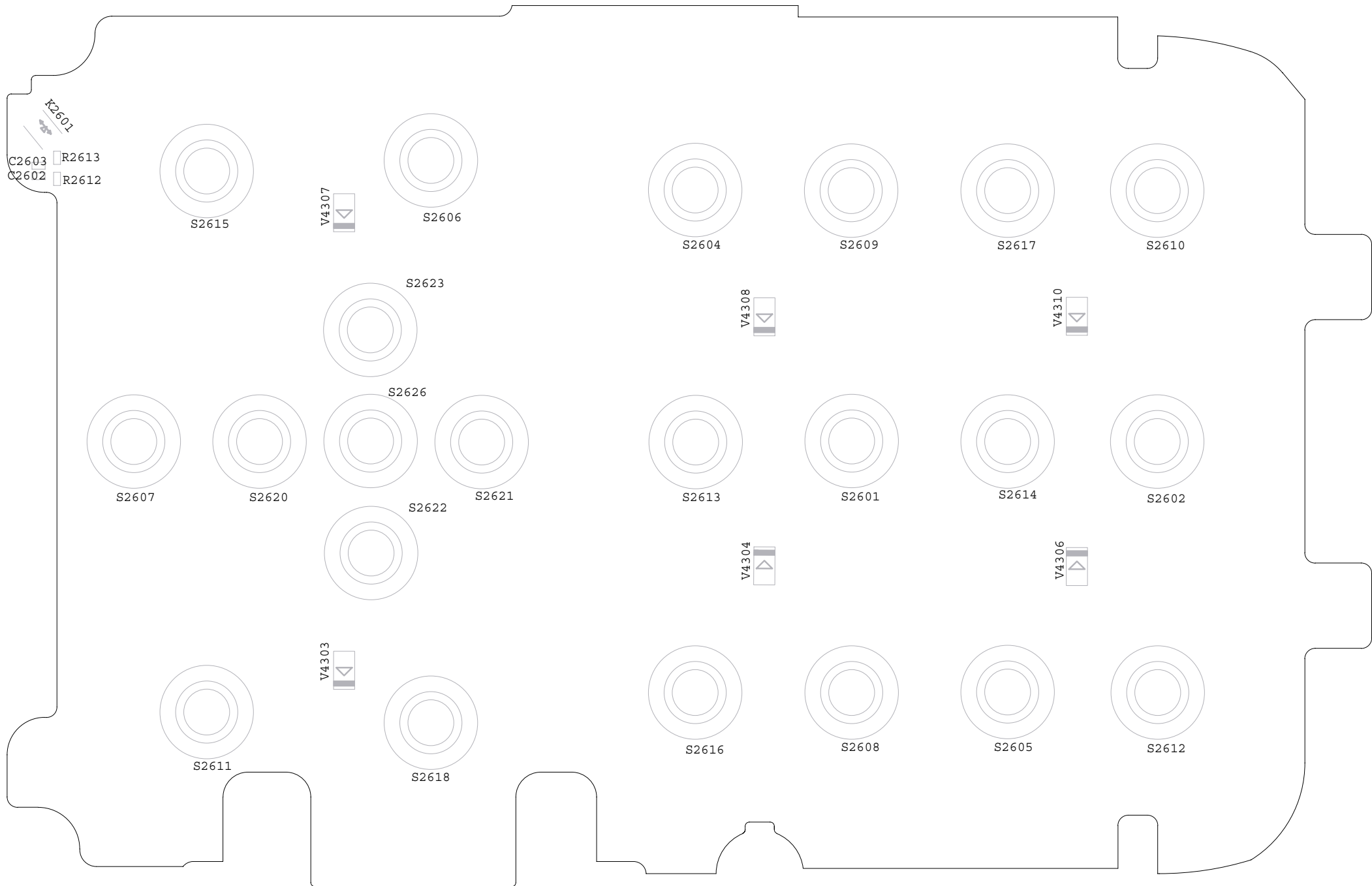
1 Mounting drawing table

By using the “Search” function and enter the component name you can find the position of the component (Use Adobe Reader 7.0 or a later version). Example: You can see the component name highlighted on the circuit board (use zoom to enlarge).



2 Mounting drawing





3 Revision history

Rev.	Date	Changes / Comments
A	2007-10-10	1 st release